



AWA Newsletter



A member of the American Association of Woodturners

Location: Homewood Senior Center at 816 Oak Grove Road, Homewood, AL 35209
 Web Site: www.alabamawoodturners.com

Coming Events

- Sep 12 – Pat Matranga
- Oct 10 – Brian Simmons
- Nov 14 – Round Robin
- Dec 12 – Christmas Party

The Sep pre-mtg demo will be on use of the spindle gouge – Bruce Gibson

Officers of AWA

- President** – Kevin Felderhoff
- Vice President** – Worth Barham
- Secretary** – Richard Serviss
- Treasurer** – Norris Jackman
- Directors:** Don Blankenship, Bill Hubbard, Dave Chanslor, Judy Osmundson, Donald Payne, Jess Walls, and Brian Simmons
- Web Master** – Robert Scheittlin
- Training** – Phil Fortmeyer
- Newsletter Editor** – Jerry Hanchey

Inside this issue:

- Aug Competition Results
- Part 1 of two part article on How to Make a Woodburner by Dave Chanslor

Pg. 2

Pg 3

President's Message



Please join me in giving a big thank you to our own club member, Jess Walls for his informative start to finish demonstration on turning platters. Jess is also the President of the North Alabama Wood Turners which meet the 4th Saturday of the month at 9:00 a.m. at 208 Sparks Avenue in Boaz, Alabama. When you get an opportunity, please check out and enjoy one of his meetings.

Attendance continues to be strong and it is great to be able to exchange tips and techniques with one another.

Please remember to bring your Christmas ornaments for the Children's Hospital fund raiser. The club's goal is a minimum of 350 ornaments. Bill West is in charge of this project if you have any questions.

September 12th's meeting features Pat Matranga. We are really looking forward to her demonstration. Pat has been featured in Southern Living magazine as well as many local news publications. She has also appeared in countless television programs including HGTV. Please mark your calendar and do not miss this opportunity to watch Pat in action.



Jess Walls demos how to make a platter

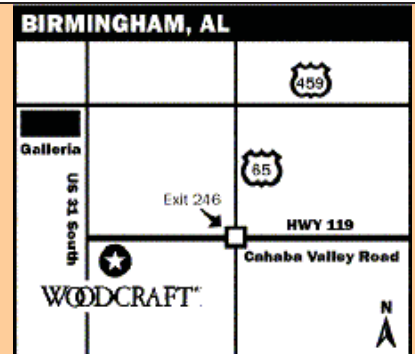


Samples of Jess's work



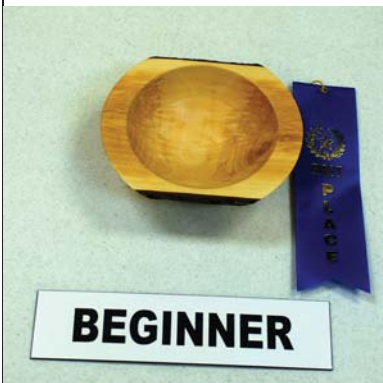
220 Cahaba Valley Rd.
 Pelham, AL 35124
 Phone: (205) 988-3600
 Web Site: www.woodcraft.com
 Email: Birmingham-retail@woodcraft.com

Store Hours:
 Monday, Tuesday, Wednesday, Friday: 9 am – 7 pm
 Thursday: 9 am – 9 pm
 Saturday: 9 am – 6 pm
 Sunday: noon – 5 pm



THE AUGUST COMPETITION RESULTS – Our monthly club competition returned in August after skipping July to allow more time for Binh Pho’s demonstration. We had a pretty good turn out with entries in all categories. The results are shown below.

👉 Beginner Category 👈



Tom Corbit – 1st place



Paul Genereux – 2nd place



Tom Corbit – 3rd place

👉 Intermediate Category 👈



Delbert Freeman – 1st place



Sean McCurley – 2nd place



Mel Brown – 3rd place

👉 Advanced Category 👈



Bob Henry – 1st place

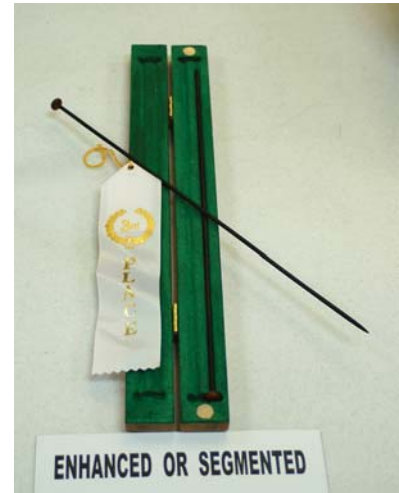


Mark Couto – 2nd place



Mark Couto – 3rd place

Enhanced Category

Rob Scheitlin – 1st placeMel Brown – 2nd placeDelbert Freeman – 3rd place

Make a Wood Burner from a Battery Charger (part 1)

By Dave Chanslor



It's nice to have a woodburning system on those occasions that you need one but if you're like me, I don't need one a lot so I never bought one. I have seen some home-made systems on the web and we had a demonstrator show us one in the past. I learned from Worth Barham that he had built one with instructions from Graeme Priddle of Australia. So I checked his out and here is how he built it, and how I built mine with slight modifications. This one has plenty of power for branding or delicate work and you can have it just like you like it.

First you buy a manual 10 amp battery charger or find an old one that is manual or has a manual mode. The one Worth has is a NAPA model 85220 and costs about \$55.00 compared to \$100 to \$150 for the small burner systems in the stores. All you do is install a good quality light dimmer switch (600 watt about \$8.00 in the power line to the charger and make a do-it-yourself burner hand piece using nichrome wire and hook it to the wires that go to the battery after removing those clamps that come with it. How easy is that? You can add these things external to the charger or tear into the charger case and do the modifications internally as we do in this article.

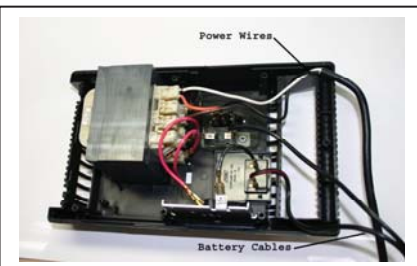


Figure 1

I will take you through my modifications of the NAPA charger below. The NAPA charger has a case that is easily removable and there is plenty of room to add the dimmer and phone jacks in the existing case. (There is a picture at the end of part 2 of this article showing another way to make one without going into the case if you don't mind taking a lot of space.) First you open the case and identify the power wires (unplug first!) and the wires that go to the battery terminals. See **Figure 1**. Pull those wires out of the way after looking at how the power wire is routed through the case so you can put it back when you finish hooking up the dimmer.

Continued next page

Install dimmer switch

The case has a channel the runs around the inside of the case for rigidity. It is just right for holding the dimmer plate if you notch the plate to avoid some stiffeners as shown in **Figure 2**. Slip the dimmer into the slot

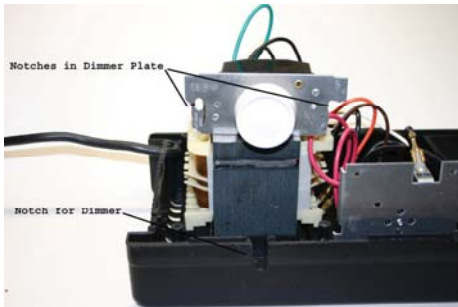


Figure 2

after it has been trimmed to fit. The power wire has a black and a white lead. The black lead is the hot wire if your wall plugs are wired correctly. The dimmer is hooked in line with the hot wire so cut the black wire and attach the dimmer to the two loose ends. **Figure 2A** I used the wire nuts that came with the dimmer. (Note: I bought a Levitron dimmer switch at Home Depot first and it worked erratically so I

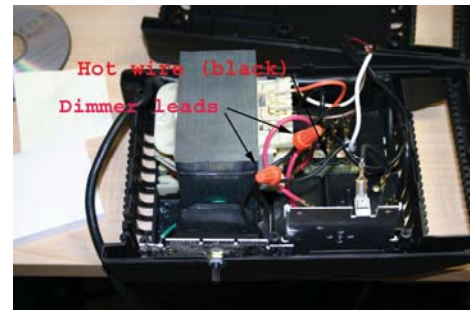


Figure 2A

replaced it with a Lutron from Lowes. It was a better made unit and works well.)

Install phone jack for burner hand piece

Drill a 3/8 inch hole in the case in an area where there is room for the wires inside the case. The phone jack and plug can be bought at Radio Shack. Buy a 1/4" mono plug and jack, not the stereo. The wire connections are soldered so connect the wires before you install the jack in the case. The charger wires that go to the battery terminals are used for the burner hand piece.



Figure 3

Cut these wires so that there is enough to go to the jack you are installing in the case. Make the wires long enough that the case can be opened and the two halves can lay side by side. (**Figure 3**) Now install the jack. Make one change in the charger wiring inside the case. Look at Figure 4 and locate the breaker inside the case. The breaker is there to protect the charger when a user touches the two charger leads accidentally or if the current flow is two

high on a weak battery or a shorted battery. The two arrows point to two terminals. The charger comes with the lead hooked to the bottom terminal which protects the charger. Move the connector to the top terminal as shown in the **Figure 4**. This avoids the breaker interrupting you while you are using the charger as a woodburner. Since you are controlling the voltage and amps with the dimmer switch you can avoid destroying the charger. Your burner tip provides the protection because it will burn up before the charger will. I used the system with the breaker hooked up with no problem but in a prolonged burning session it may cause problems. It is Priddle's recommendation to bypass the breaker. (*Part 2 on the handpiece appears in next month's newsletter*)

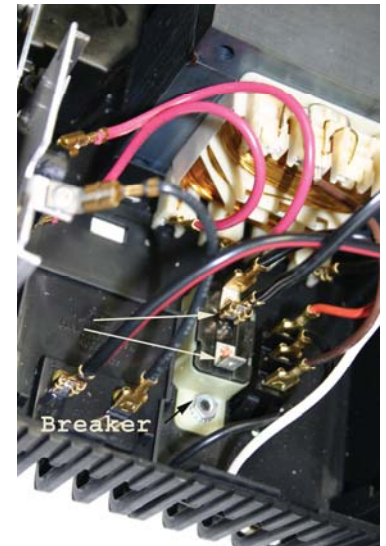


Figure 4

For those interested in joining our club, it is a great way to share and learn woodturning techniques. With over a hundred members, the experience of our members ranges from novice to professional turner. Some have big fancy lathes and some have none. Everyone who is the least bit interested in knowing more about this addictive hobby, contact Richard Serviss at (205) 853-2136, Norris Jackman at (205) 678-9348 or Kevin Felderhoff at (205) 823-2011 and they'll happily answer your questions and get you signed up. OR...come visit us at our next meeting. We meet the second Saturday of each month. Meeting starts at 9:00 am, but people start showing up before 8:00 am. Questions are welcome and answers are plentiful.

Meeting Location

From I-65 N, exit 256B (From I-65 S, exit 256A). Turn West on Oxmoor Rd. go about .5 mi – halfway there take the left fork at the traffic light (means you'll go straight ahead) – Turn left onto Oak Grove Road and go about .2 mi. Homewood Senior Center is on the right. Check out our Web Site at www.alabamawoodturners.com for much more about our club.