



# AWA Newsletter



A member of the American Association of Woodturners

Location: Homewood Senior Center at 816 Oak Grove Road, Homewood, AL 35209  
Web Site: [www.alabamawoodturners.com](http://www.alabamawoodturners.com)

### Coming Events

- Mar 8 – Maurice Clabaugh
- Apr 12 – Worth Barham
- May 10 – Open
- Jun 14 – Tony Rae (Ireland)

### President's Message

The February meeting was a good meeting and good program. In my absence Bruce Gibson led the meeting. We had good attendance and had three new members to join AWA in February, Eddy Jowers of Pelham and Sharon & Paul Henninger of Anniston. I failed to mention one new member who joined in January in the last newsletter, Henry Raymond in Alabaster. Welcome! One year ago in February we had eight new members join the club. Three of them have become quite active in the club leadership. They are: Norris Jackman, our Treasurer, Kevin Felderhoft who is on the board and Jess Walls who had taken on various tasks. It's great to see new members jump right in and help. New members mean new ideas and new energy for the club.



\*\*\* Dues are Due!!!!\*\*\*\*\*

We are way behind on dues collection this year so every one see the treasurer Norris Jackman and settle up. Thanks.

Our program for February was Larry Thomas who showed us how to do some of his fantastic finishes! His presentation was very entertaining and informative. *Continued on page 5*

### Officers of AWA

- President** – Dave Chanslor
- Vice President** – Bruce Gibson
- Secretary** – Richard Serviss
- Treasurer** – Norris Jackman
- Directors:** Don Blankenship, Kevin Felderhoft, Phillip Fortmeyer, Bill Hubbard, Jerry Osmundson, Judy Osmundson, and Lee Taylor
- Web Master** – Robert Scheitlin
- Training** – Will Pate
- Newsletter Editor** – Jerry Hanchey

### Club Hands-on Workshop: (Will Pate)

Phil Duffy guided the Feb hands-on class through the process of making a "Goblet." Great Class! The only surprise was how many different ways you can hollow the inside of a goblet.

New classes are filling up fast. Sign-up sheets will be available at each club meeting for the classes listed, or you can call me at (205) 907-0638 to check class availability. Even if the sign-up sheets show full, I call the week before the class, not everyone who signs up can attend. So if you are interested please put your name on the list, you still could make the class.

#### 2008 Hands-on Class Schedule – (Cost is \$25/person each class)

Mar 8	Natural Edge Bowl – limit 6	Maurice Clabaugh
Apr 12	How to Sharpen <u>Your Tools</u> – limit 8	Pat Johnson
Apr 12	Basic Segment Construction – limit 4	Nevin Newton
May 10	Hollow Vessels – limit 6	Will Pate
Aug 9	Christmas Ornaments – limit 6	Bill Hubbard
Sept 13	Pepper Mills – limit 6	Phil Fortmeyer

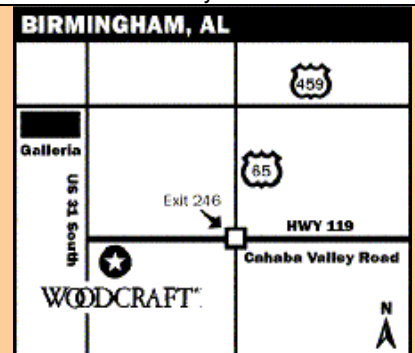
### Inside this issue:

- Article by Maurice Clabaugh (Part I) Pg 2
- Competition Results Pg 4
- President's Message continued Pg 5



220 Cahaba Valley Rd.  
Pelham, AL 35124  
Phone: (205) 988-3600  
Web Site: [www.woodcraft.com](http://www.woodcraft.com)  
Email: [Birmingham-retail@woodcraft.com](mailto:Birmingham-retail@woodcraft.com)

Store Hours:  
Monday, Tuesday, Wednesday, Friday: 9 am – 7 pm  
Thursday: 9 am – 9 pm  
Saturday: 9 am – 6 pm  
Sunday: noon – 5 pm



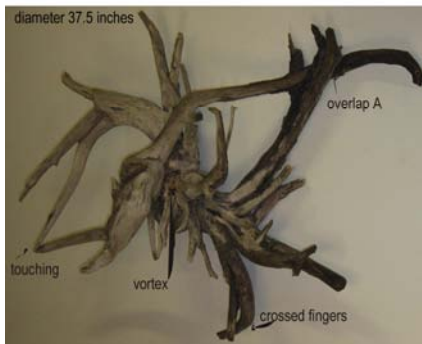
Go by and see Tom and the guys!!

Maurice Clabaugh has written a rather comprehensive article on turning a very **challenging** piece of wood. The shape and size of the piece required Maurice to solve some problems with respect to “chucking” the blank, accommodating the diameter on his existing equipment, and of course the order of cuts needed to prevent him from destroying the piece and/or getting “whacked” himself. Some of you may also recognize Maurice’s use of the “Scientific Method of Problem Solving.” But regardless of that, as you’ll see in reading the article, he tells us a good bit about the thought process he uses to complete this project. Because the article is rather long, I’ll present it in three parts in the upcoming newsletters. So, if you find it interesting as I did, you’ll have something to look forward to in follow-on newsletters. -Editor-

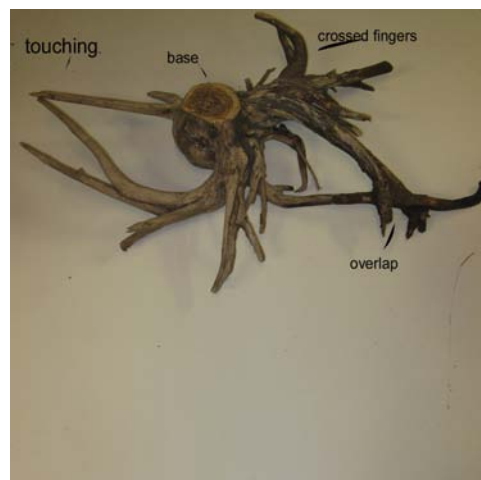
## PASSION BY MAURICE CLABAUGH (Part 1)

Webster gives one definition of Passion as “a strong barely controllable emotion”. To think “outside the box”, I feel that it is necessary to have a passion for discovery of the seemingly impossible. In turning “moving outside the box” is to push the limits of the wood, the equipment or the turner’s skills. One must think beyond a spindle, a bowl, or an embellishment the wooden item. The desire to push these limits requires passion to such a degree that you risk ruining the object and disappointment, if you fail. If you succeed you risk being seen as “someone with a twisted mind, weird or different” as well as the risk of being seen as an innovator. But regardless of the risk, it is passion of turning, pushing the limits of my skill level that is the satisfying motive that pushes me to go beyond the usual. So I have adopted a mantra of **“others say why and I say why not”**.

In 2000, I received a root from a Florida Torchwood tree which had a of 37.5 inches diameter. Florida Torchwood grows in swampy conditions and can be used “as a torch for those need emergency light. The wood is so filled with pitch that it can be lit easily, thus the name Torchwood. Turning the wood gives off a spicy smell that is quite pungent. The “gnarly” roots intertwined, overlapped and spread in different directions while being attached to a very small, misshapen trunk. In trying to determine the best way to turn the piece, I had discovered several problems: 1) the diameter of 37.5 inches was far larger than lathes I had access to (29.5 swing of my Stubby lathe or the 16 inch of the Jet 1642 lathes); 2) the trunk of the piece was too misshapen (short, cut at a drastic angle and only about 4 inches in diameter) to allow the direct use a faceplate; and 3) the trunk lacked the length to allow clearance space for turning tools (i.e. some of the roots curved back towards the trunk rather than downward from the trunk). These problems presented new challenges to this turner, who refuses to “throw the wood away” rather than trying to meet the challenges presented by the wood. Mission impossible...I don’t think so. So, like many problems I face when dealing with “distressed wood”, the root was left untouched, as a decorative ornament, outside the entrance to my studio.



Picture 1 – Torchwood Root  
Top View



Picture 2 – Torchwood Root  
Bottom View

After seven years of contemplation on an almost daily basis, each problem was addressed individually and at different times. And, of course, one problem often created or impacted on another and as things progressed new problems were sure to appear.

Problem 1 is Size - (the diameter of the blank is 37.5 inches)

Possible solutions:

Option 1) reducing the size to 29.5 inches by cutting the roots.

Option 2) turning the wood outboard (off the end of the lathe using an outboard tool rest and mounting the root in a chuck).

Option 3 is to sculpt the piece rather than turn it.

Problem 2 is Mounting - (Short and misshapen trunk)

Possible solutions:

Option 1 is sculpting rather than turning the root blank (making it a sculpture only).

Option 2 is to lengthen the trunk, before or after turning, by augmenting the trunk with another piece of wood (alike or contrasting wood).

Option 3 is to work around the misshapen trunk by turning it (squaring it off and making it round).

Problem 3 is the Shape - (the trunk lacked the length to allow clearance space for turning tools) [i.e. some of the roots curved back towards the trunk rather than downward from the trunk]-

Possible solutions:

Option 1 sculpting rather than turning the root blank (making it a sculpture only).

Option 2 reducing the roots that "curved back toward the trunk" (removing the offending roots).

Option 3 is using an extension on the lathe shaft to allow holding the blank on a faceplate and waste block.

Option 4 adapting turning techniques by using hollow turning curved tools.

Using a divide and conquer strategy, I analyzed each problem separately, at different times and always having the "assumed" option to "throw the wood piece away".

Problem 1 - The challenge of this piece was the size and shape of the piece. To reduce the size and alter the shape would destroy the beauty of the root. It was the very nature of the root structure of overlapping and the flowing aspects of the roots that gave the blank its beauty. Options to change the size or shape were not acceptable. Turning outboard on the Stubby lathe was not available but was available on the Jet 1642 lathe (moveable headstock). Moving the headstock of the Jet 1642 to the end of the lathe bed would allow me to extend the swing of the lathe from 16 inches to 45 inches... solving my size restriction. Turning outboard was possible on the Jet but additional problems of attachment occurred.

Problems 2 and 3 - The length, size and shape of the trunk was not amenable to turning with an attached faceplate. The trunk was too short, misshapen and cut at a 45-degree angle. To be usable the trunk must be turned round, square and the root must be centered on the correct plane to maximize the root structure and shape. This called for turning between centers (headstock and tail stock) to allow for these problems in the trunk. Thus enters an additional problem (4): How to turn between centers when you must turn outboard?

Solving problem 4 was necessary to help solve all the other problems. Luckily I had access to two jet lathes in the same room. My thinking went like this: why not turn between centers using two lathes back-to-back. By pushing two lathes together, I could use the headstock from one and the tailstock from the other. Thus, my turning swing would be 45 inches maximum, more than enough, as shown later in Picture 4.

It's important to note that to make this work the lathes must be centered so that the headstock and tailstock are on the same plane (as you would have it if you were turning on only one lathe) this is shown in Picture 3.

...to be continued.

*Next month we will continue with part two of this three part article by Maurice Clabaugh*



Picture 3 – Two lathes operating as one

## Feb Competition Results

The February meeting was a good one for the competition. There were several entries in each of the four categories and the variety of pieces illustrates how our membership is growing in terms of the new designs and efforts to widen the range of turning designs. Below are the names and order of pieces judged by this month's judge, Nevin Newton.

**ENHANCED CATEGORY** – Those entries that have been enhanced by the use of pyrography, texturing, painting, carving, or segmented construction are placed in this category.

First Place – Worth Barham. His unusual piece contains Live Oak, Chinese Chestnut and Osage Orange (picture 1).

Second Place – Worth Barham. This piece is Birdseye Maple and Walnut.

Third Place – Bob Henry. This "stick bowl" is made of Sassafras glue-ups with a Corian rim (picture 1).

### ADVANCED CATEGORY

First Place – Moody Davis. Large bowl of Osage Orange with voids (picture 2).

Second Place – Staten Tate. Maple platter.

### INTERMEDIATE CATEGORY

First Place – Robert Scheitlin. A closed vessel of Thuya Burl and Spalted Maple (picture 3).

Second Place – Brian Simmons. A small open vessel of Cherry Root and a necklace stand of different woods (picture 3).

Third Place – Worth Barham. A heavy shallow bowl of Elm (picture 3).

### BEGINNER CATEGORY

First Place – Kevin Felderhoft. Christmas ornament and stand of Mt. Laurel and Mahogany (picture 4).

Second Place – Anonymous. A punky Poplar piece (picture 4).

Third Place – Shaun Swanner. A thick bowl of Aromatic Cedar (picture 4).



Picture 1



Picture 2



Picture 4



Picture 3

Continued from page 1

The program for the March meeting will be our own Maurice Clabaugh. He will demonstrate making a natural edged bowl. Maurice is a remarkable wood turning artist. He teaches woodturning the Black Warrior Studio and has written articles for our newsletter and web site. We will learn a lot from Maurice's presentation.

Looking ahead, the next meeting on April 12 will feature Worth Barham a member of our club and past board member. The may program is up in the air right now but Bruce Gibson will have it together when the time is right! We have an Irish turner Tony Rae who is scheduled for June but may come and dome in May instead, thus the conundrum over the Amy meeting program. We will have a cook out on the month the Tony is here. Stay tuned...

It's time to order Anchorseal Wax sealer again. We will have a 55 gal drum in time for the April meeting so save up some one gal jugs. The cost will be the same as last year: \$7:00 per gallon. Kevin Felderhoft will be organizing the distribution for us with help from others. Pat Connell will receive the shipment at his company shipping dock as before. Please bring containers, that are even gallons, to the May meeting because we have no way to measure except by your own container. Thanks in advance to all that help with this.

The southern States Symposium will be held April 25-27 in Gainesville, GA and as in years past, we are a sponsor. You can get the details on our web site under Schools & Symposiums. Don Blankenship will coordinate our support team again this year to see that we provide support for the demo room that we sponsor. We will discuss the details at the meeting Saturday.

On a personal note, my schedule vs. the AWA meetings has been a "train wreck" this year so far. I missed the February meeting and will miss the April meeting as well and may miss the June meeting. I have always been able to make most of the meetings but I am really struggling this year with things that I just can't work around. I appreciate those who are filling the gap in my absence. Bruce Gibson has done a great job both filling in for me and getting the programs together. I hope things will improve in the second half of the year!

We plan to have a short board meeting after the meeting. See you at the March meeting.

Dave

---

## **A REMINDER -**

Mel Brown and his crew are still making DVDs for a modest \$10.00. If you would like to have a record or reference of one of our demonstrators or training classes please contact Mel (if he's around) or one of the video crew about purchasing one. Previous programs are also still available I believe. - EDITOR

## *Come and See Us!*

For those interested in joining our club, it is a great way to share and learn woodturning techniques. With over a hundred members, the experience of our members ranges from novice to professional turner. Some have big fancy lathes and some have none. Everyone who is the least bit interested in knowing more about this addictive hobby, contact Richard Serviss at (205) 853-2136 or Dave Chanslor at (205) 669-5196 and they'll happily answer your questions and get you signed up. OR...come visit us at our next meeting. We meet the second Saturday of each month. Meeting starts at 9:00 am, but people start showing up much earlier. Questions are welcome and answers are plentiful.

## **Meeting Location**

From I-65 N, exit 256B (From I-65 S, exit 256A). Turn West on Oxmoor Rd. go about .5 mi - halfway there take the left fork at the traffic light (means you'll go straight ahead) - Turn left onto Oak Grove Road and go about .2 mi. Homewood Senior Center is on the right. Check out our Web Site at [www.alabamawoodturners.com](http://www.alabamawoodturners.com) for much more about our club.